

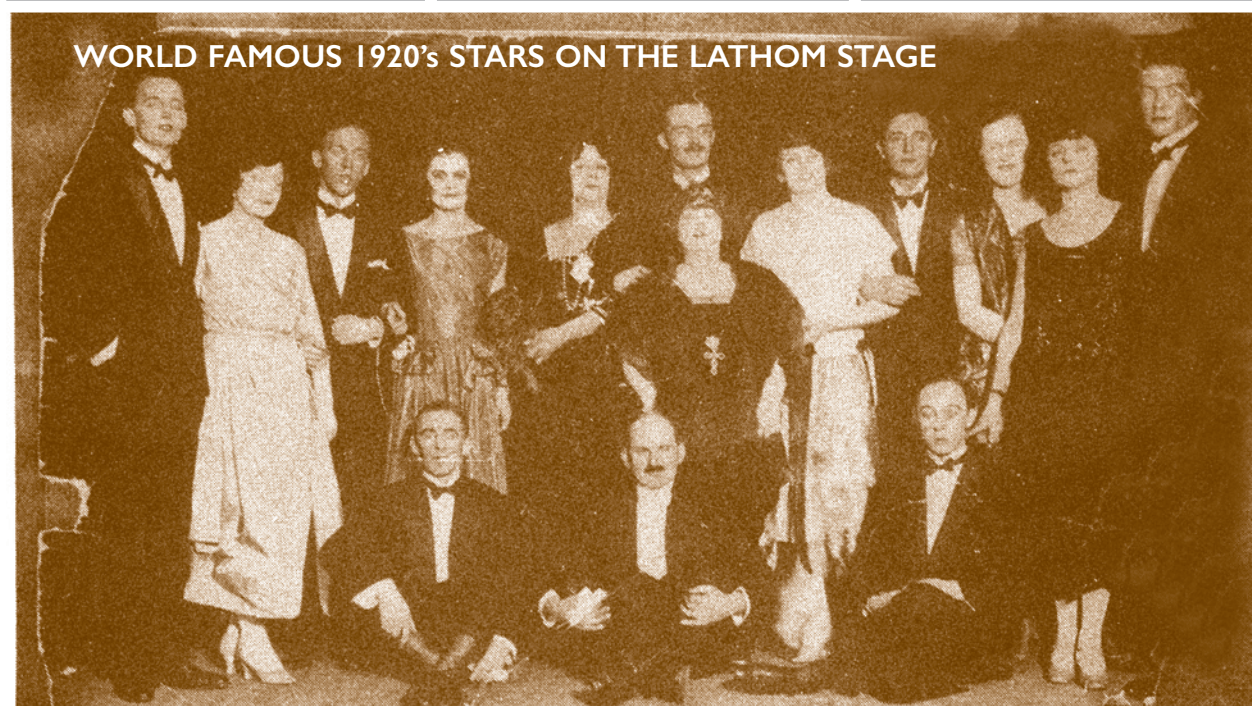
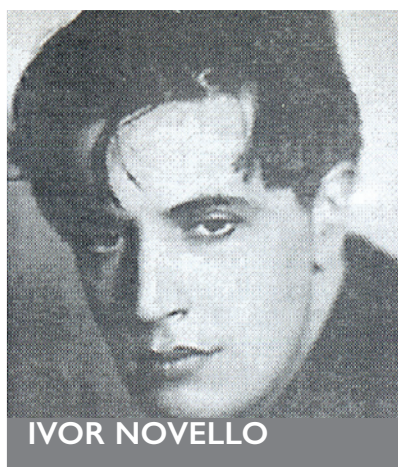
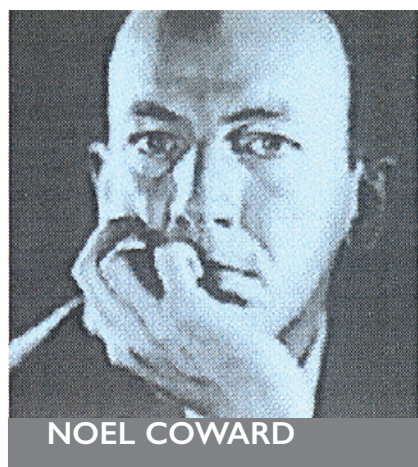
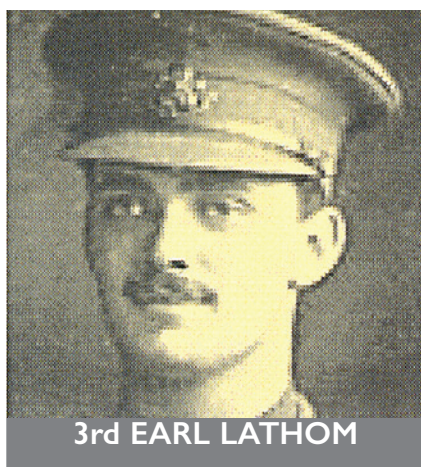
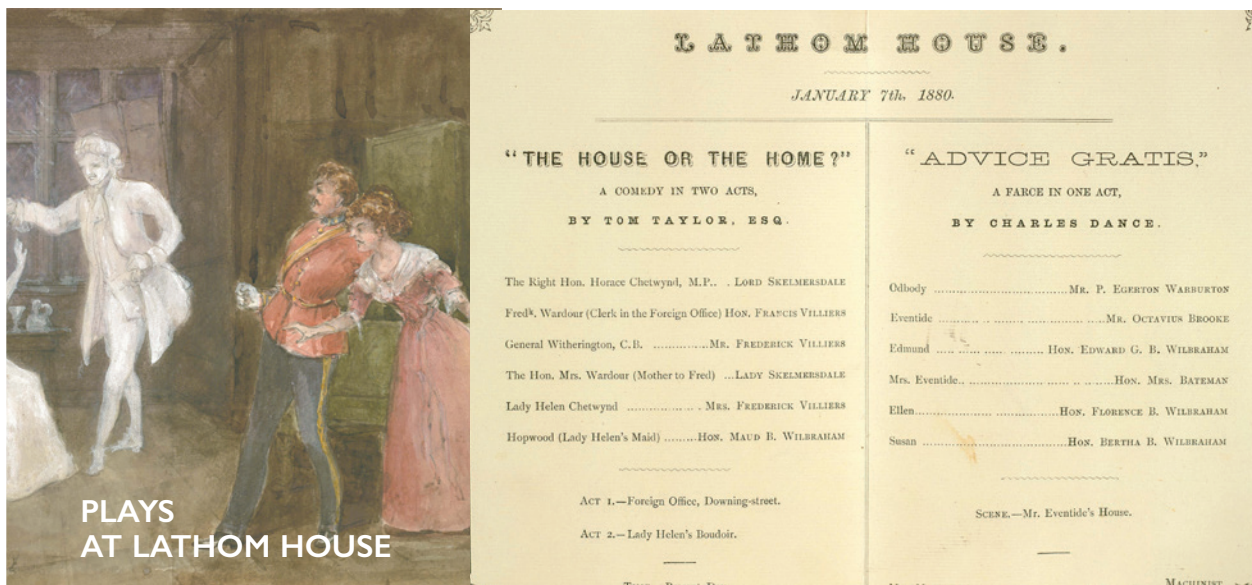
WHY HISTORIC LATHOM ?



Theatrical Lathom

Shakespeare's 'lost years' were possibly spent at Lathom House tutoring the Family's children and he was also involved in Lathom's two month long medieval Festival of Plays.

Theatricals were performed at Lathom House in the 1800's and world famous stars appeared at Lord Lathom's 'Little Theatre' in the 1920's - the original theatre and stage still remain.



For the full, exciting details visit our website
www.lathomparktrust.org.uk

LATHOM
PARK
TRUST

